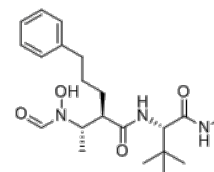


Product Name : GI 254023X
Cat. No. : PC-73195
CAS No. : 260264-93-5
Molecular Formula : C₂₁H₃₃N₃O₄
Molecular Weight : 391.51
Target : Matrix Metalloproteinase (MMP)
Solubility : 10 mM in DMSO



Biological Activity

GI 254023X is a potent, preferential ADAM10 inhibitor with IC₅₀ of 5.3 nM, also inhibits MMP9 (IC₅₀=2.5 nM), preferentially blocking ADAM10 but not TACE.

GI 254023X displays >100-fold selectivity for ADAM10 over ADAM17 (TACE).

GI 254023X blocks antibody-induced shedding of target antigens, increases specificity of targeted immunotherapy in vitro.

GI 254023X inhibits PACAP-induced shedding of RAGE in PAC1/RAGE cells.

GI 254023X remarkably inhibits the proliferation and induce the apoptosis of H929 cells.

References

Hundhausen C, et al. Blood. 2003 Aug 15;102(4):1186-95.

Budagian V, et al. J Biol Chem. 2004 Sep 24;279(39):40368-75.

Verena V Metz, et al. PLoS One
.2012;7(7):e41823.

Eichenauer DA, et al. Cancer Res. 2007 Jan 1;67(1):332-8.

Caution: Product has not been fully validated for medical applications. Lab Use Only!

E-mail: tech@probechem.com